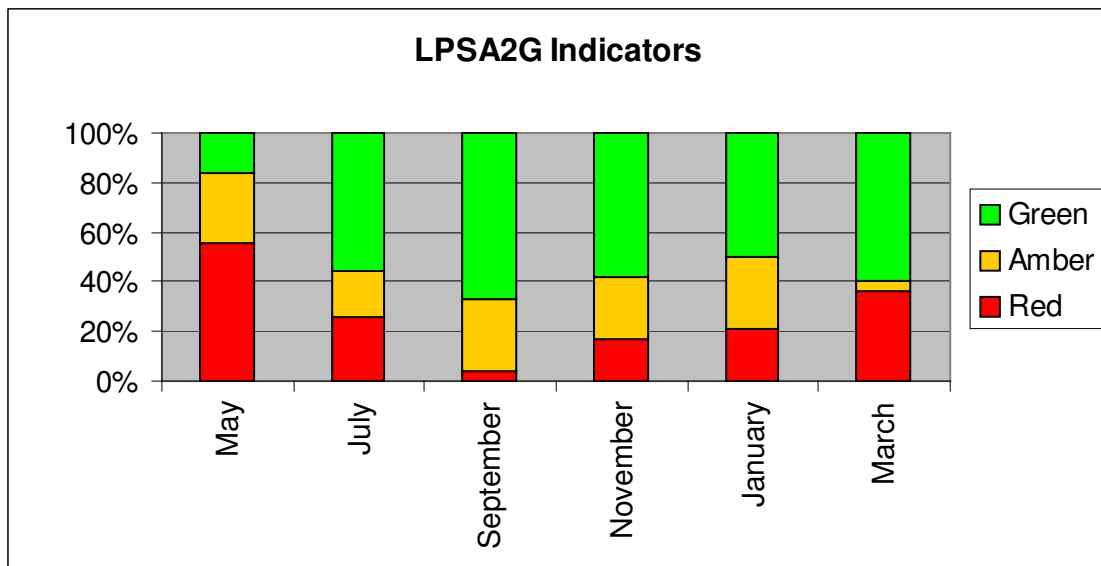


The Local Public Service Agreement (LPSA2G)

As at the end of the year **11** indicators are marked **R**, compared to 5 at the end of January. The 11 indicators are:

- HCS 33 % of half day sessions missed by children in primary schools
- HCS 34 % of half day sessions missed by children in secondary schools
- HCS 35a No. of looked after children who missed a total of 25 days or more schooling
- HCS 15 No. of emergency unscheduled hospital bed days occupied by a person 75 and over
- HCS 18c No. of people in receipt of Council Tax Benefit aged 60 or over
- HCS 21a % of babies born to teenage mothers who are breastfeeding at 6 weeks
- HCS 4e No. of residents (19+) achieving Level 3 qualification (excl. manufacturing & engineering)
- HCS 42b No. of criminal damage incidents
- HCS 45 No. of violent crimes
- HCS 62 % of adult residents who engaged in formal volunteering for an average of 2 hrs a week or more over the previous year
- HCS 64 % of adult residents who are satisfied with their local community as a place to live

The following chart shows the change in the proportions marked as **G**, **A** and **R**.



The Local Area Agreement (LAA)

At the end of the year **29** indicators have been marked **R**, compared to 8 at the end of January. In addition to the LPSA2G indicators listed above, the other indicators are:

- HCS 16 No. of people aged 65+ helped to live at home (per 1,000 population)
- HCS 13 Average length of stay in B&B accommodation for homeless households
- HCS 36 % of young offenders re-offending (recidivism rates of young offenders in Herefordshire)
- HCS 42a BCS Comparator crimes
- HCS 51a No. of calls to the Herefordshire Women's Aid Helpline
% of respondents finding it easy to access:
- HCS 59a Doctor
- HCS 59b Local hospital
- HCS 59c Library
- HCS 59d Sports/leisure centre
- HCS 59e Cultural/recreational facility e.g. theatre, cinema
- Net perceived improvement rating over the last 3 years for QoL factors (adults):
- HCS 60a Activities for teenagers
- HCS 60b Affordable decent housing
- HCS 60c Job prospects
- HCS 60e Level of traffic congestion
% of adults who use:
- HCS 65b Libraries at least once a month
- HCS 65c Museums or galleries at least once every 6 months
- HCS 65d Theatres or concert halls at least once every 6 months
- HCS 65e Parks, open play areas and other recreational facilities at least once a month

The following chart shows the change in the proportions marked as **G**, **A** and **R**.

